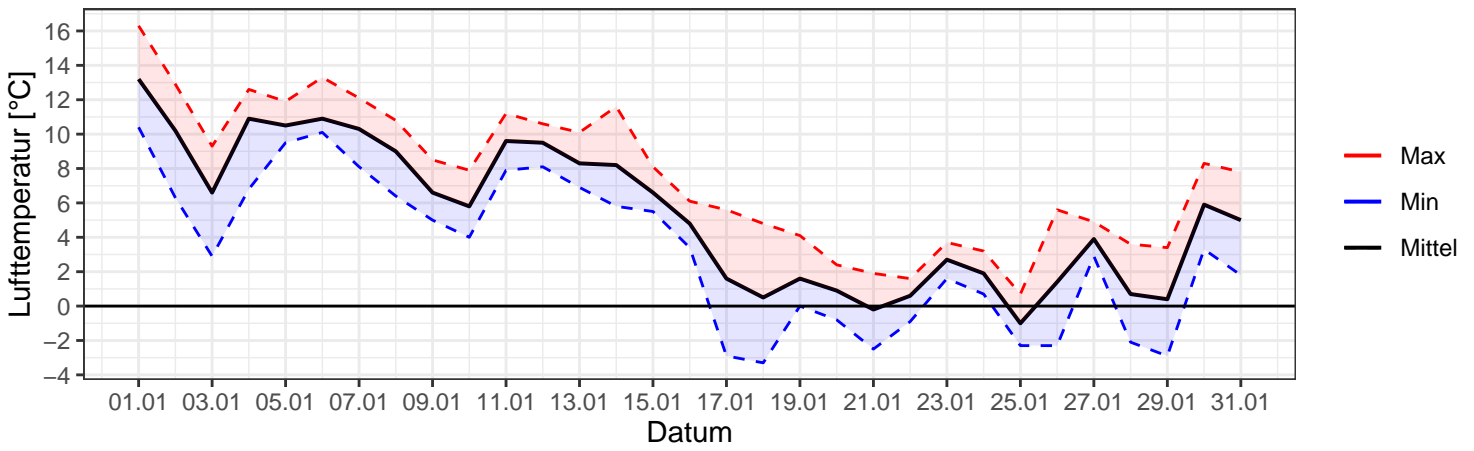
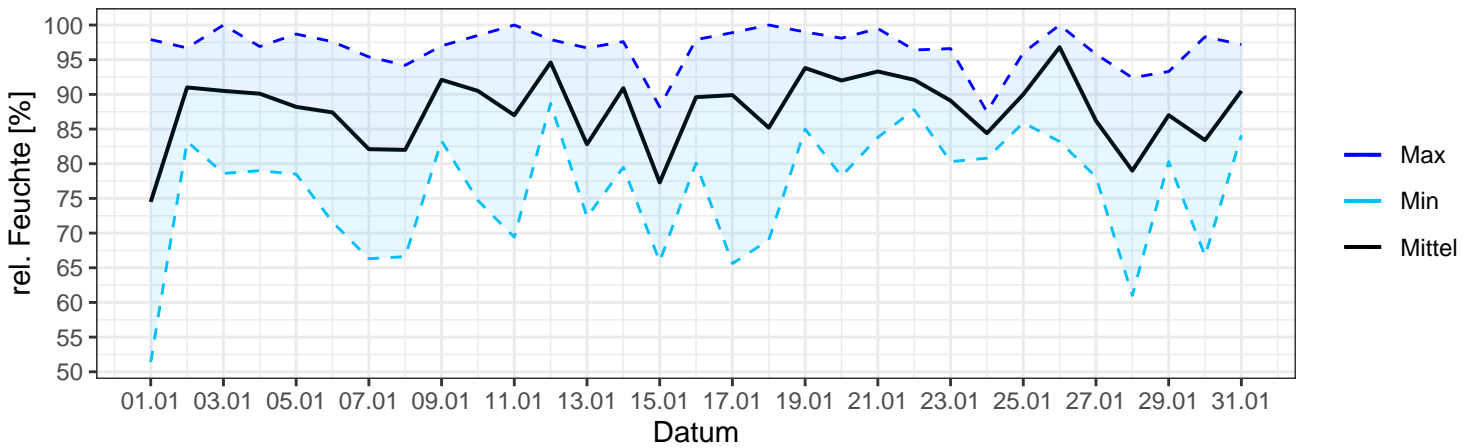


Monatsverlauf Bislicher-Insel 1/2023

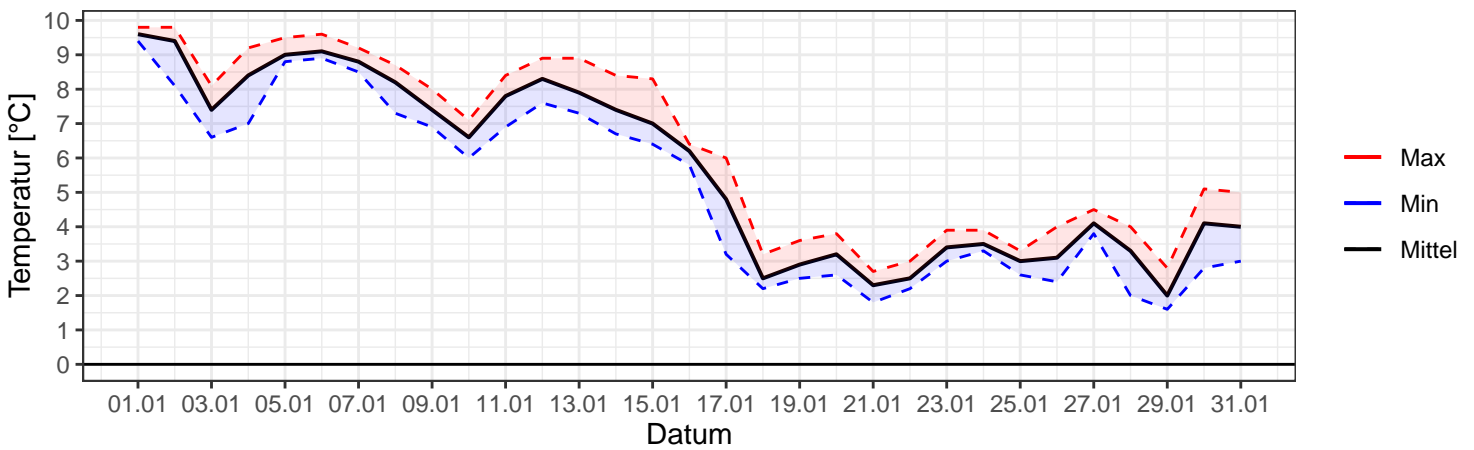
Lufttemperatur in 2 m ü.Gr.



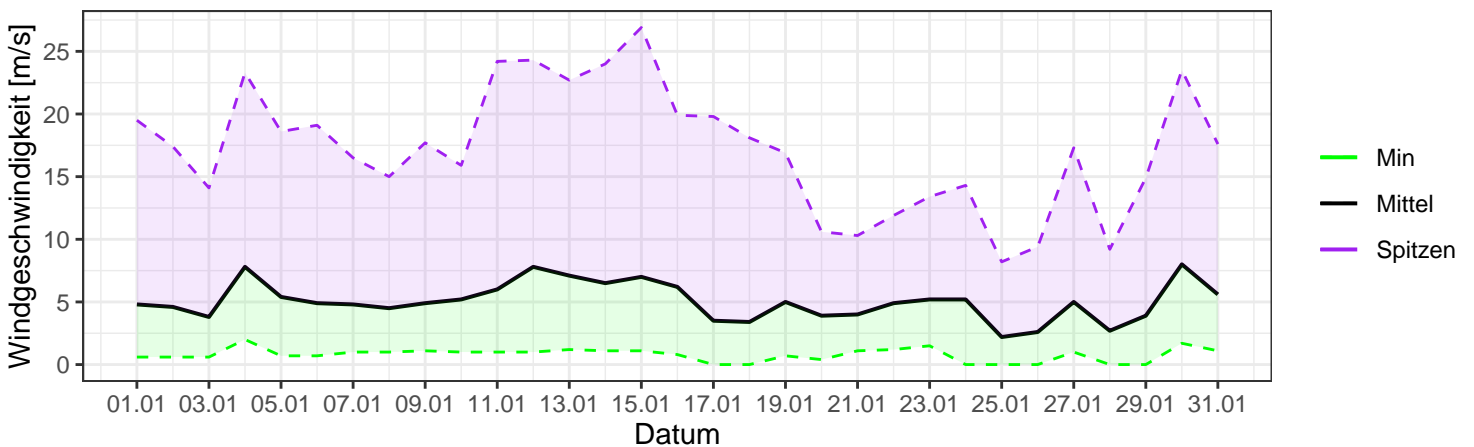
Relative Feuchte in 2 m ü.Gr.



Bodentemperatur in 5 cm Tiefe

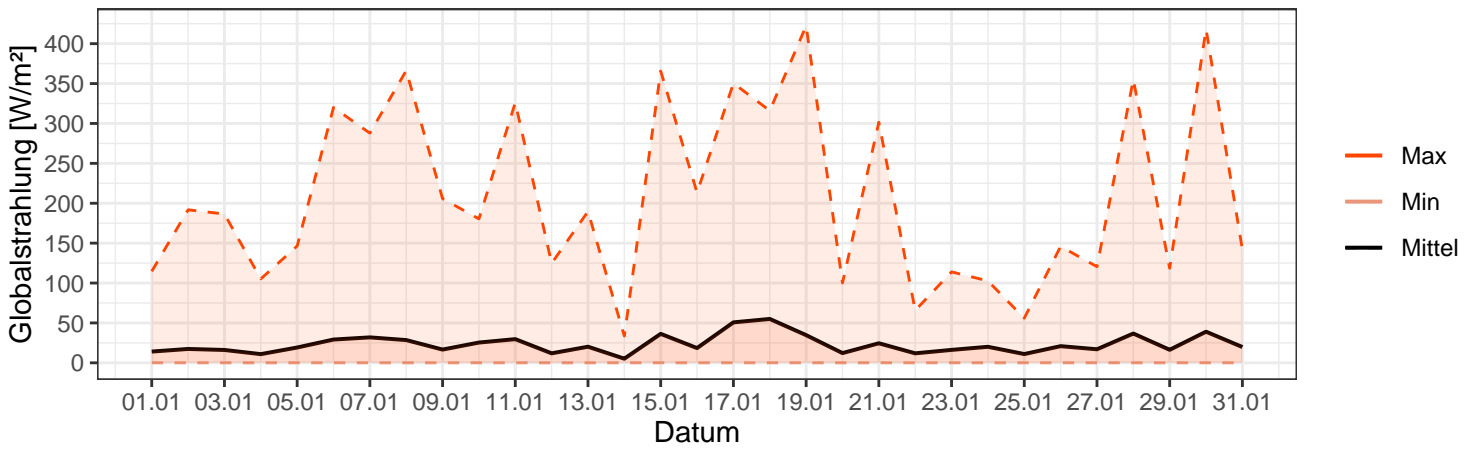


Windgeschwindigkeit

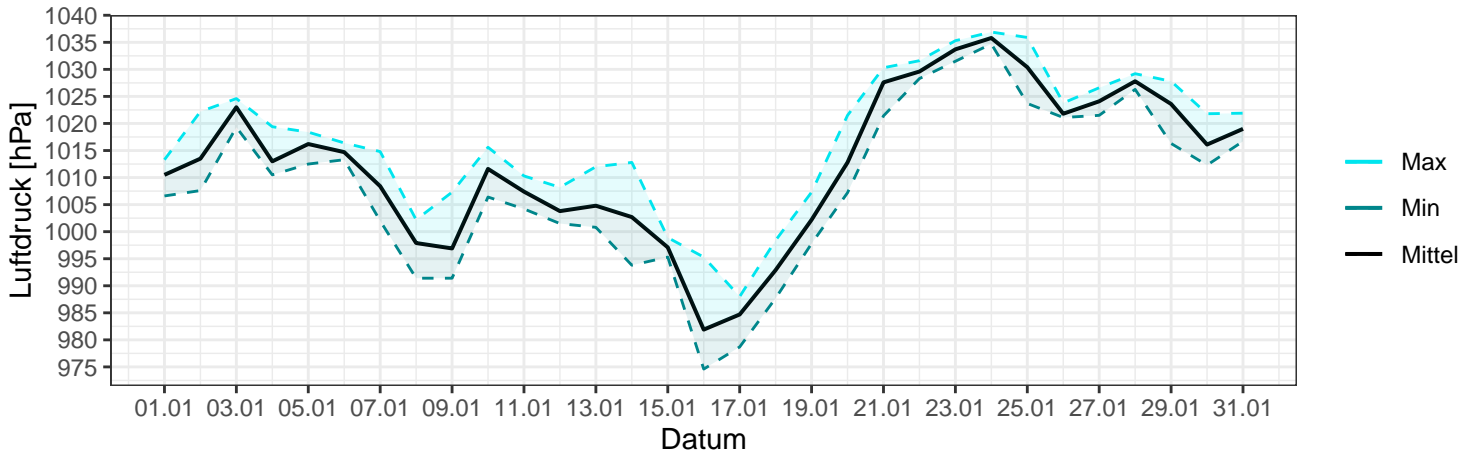


Monatsverlauf Bislicher-Insel 1/2023

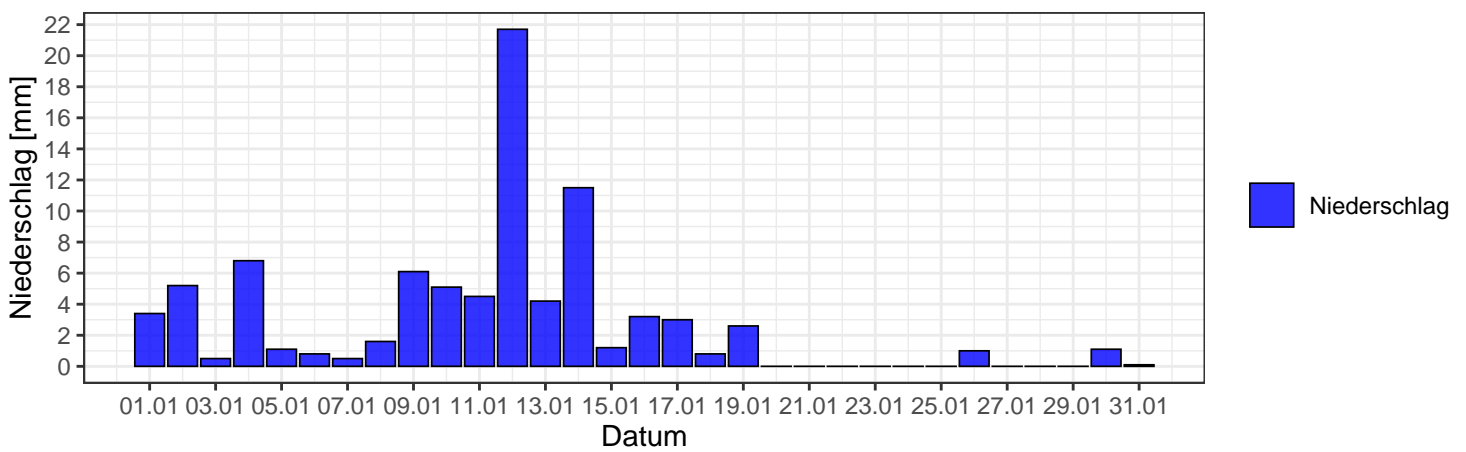
Globalstrahlung



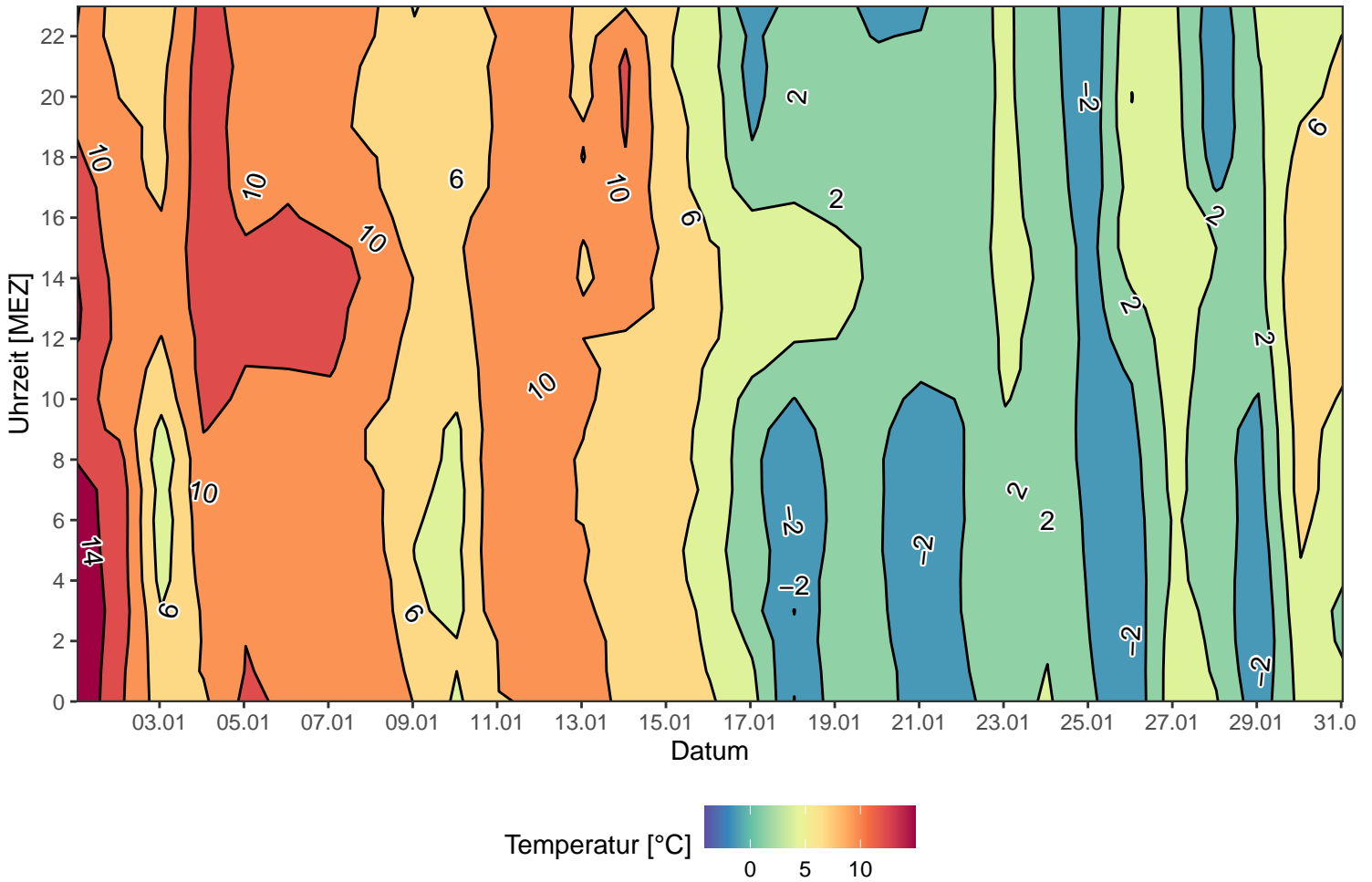
Luftdruck

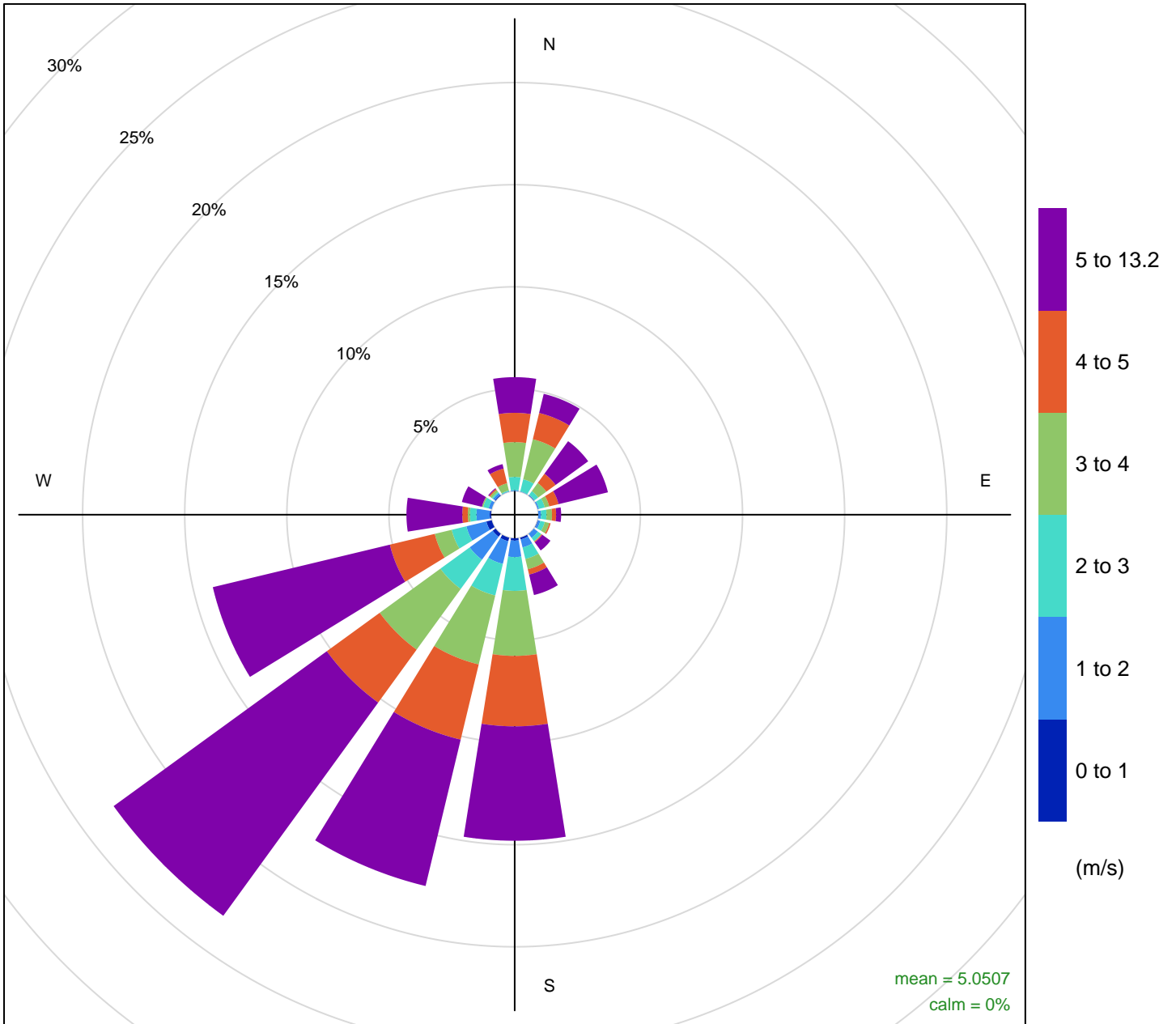


Niederschlag



Isoplethendiagramm der Lufttemperatur





Frequency of counts by wind direction (%)